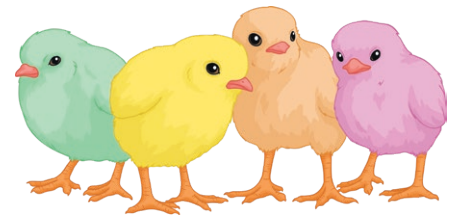


Easter Trail Quiz

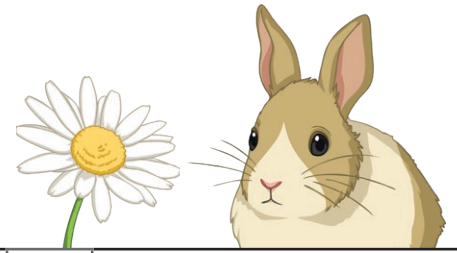
See the instructions on Page 2.



<p>6: T</p> <p>Simplify: $3a - 2b + 4a - 9b$</p> <p>Go to the lowest coefficient.</p>	<p>18: A</p> <p>There are some counters in a bag. When one is picked at random, the probability of it being green is $\frac{3}{5}$. There are 15 green counters in the bag. Go to the total number of counters in the bag.</p>	<p>4: B</p> <p>A trapezium has parallel sides of length 5cm and 3cm and the distance between the parallel sides is 4cm. Go to the area of the trapezium in cm^2.</p>
<p>-13: B</p> <p>Evaluate: $2\frac{2}{7} + 3\frac{3}{4}$</p> <p>Give your answer as a fully simplified mixed number. Go to the numerator of the fraction in your answer.</p>	<p>12: S</p> <p>Find the nth term of this sequence: 2, 9, 16, 23, ...</p> <p>Go to the coefficient of n.</p>	<p>-11: C</p> <p>Fully simplify this ratio: $25\text{ml} : \frac{1}{2} \text{l} : 600\text{ml}$</p> <p>Go to the middle number in your simplified ratio.</p>
<p>3: I</p> <p>Find the value of $(-2)^5$</p> <p>End.</p>	<p>5: E</p> <p>Go to the value of 35% of 40.</p>	<p>7: T</p> <p>It takes 8 hours for a carpenter to make a bookshelf.</p> <p>Working at the same rate, how long would it take for 6 carpenters to make 3 bookshelves? Go to the number of hours.</p>
<p>8: K</p> <p>Expand $3(4x + 5)$. Go to the coefficient of x.</p>	<p>Start: N</p> <p>Express 2240 as a product of prime factors. Go to the power of 2 in the result.</p>	<p>16: K</p> <p>The Venn Diagram shows the frequencies for sets A and B for a universal set of 16.</p> <p>Go to $n(A \cap B)$.</p>
<p>1: S</p> <p>Go to the number of pairs of sides that are parallel in a regular hexagon.</p>	<p>2: O</p> <p>Go to the median of this set of numbers: 4, 9, 3, 6, 8, 2</p>	<p>-10: E</p> <p>Write 354000000 in standard form. Go to the power of 10 in the result.</p>
<p>20: N</p> <p>Go to the number of degrees in an exterior angle in a regular 20 sided polygon.</p>	<p>14: H</p> <p>$a = -5, b = 3$ $c = 2a - b$</p> <p>Go to the value of c.</p>	<p>25: C</p> <p>Go to the mean of the following numbers: -8, -16, -4, -12</p>

Instructions

The aim of the quiz is to find three Easter words. Start in the cell labelled Start in the quiz grid. Write down the letter in this cell in box 1 of the answer grid. When you answer the question in the starting cell of the quiz grid, you will be directed to a new quiz cell by its number. Write down the letter in this cell in box 2 of the answer grid and allow the question to direct you to the next question in the quiz grid. Repeat until you have answered every question and the table below is full of letters. Now, in the answer grid, take the 6 letters in the first column and rearrange them to make an Easter word. Repeat with the second and third columns.



Answer Grid

1		2		3	
4		5		6	
7		8		9	
10		11		12	
13		14		15	
16		17		18	